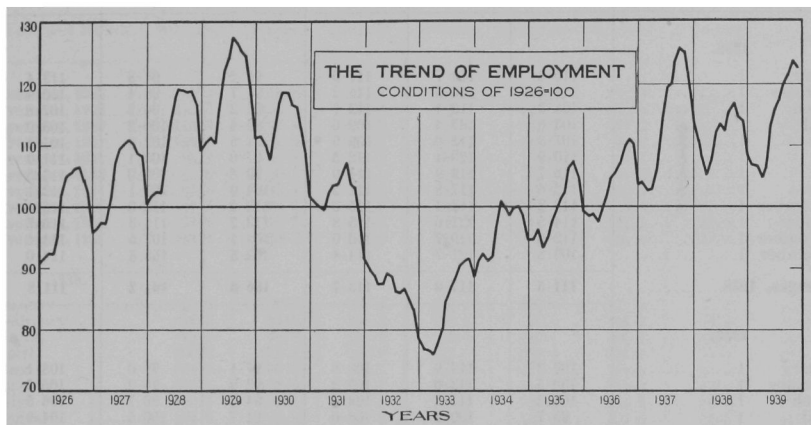


small seasonal loss shown at Dec. 1, but the index was then higher than at the same date in any other year of the record. The 1939 index averaged 113·9; it was slightly higher than the 1938 mean of 111·8, but was fractionally lower than that of 114·1 in 1937. With the exceptions of 1937 and 1929, however, the 1939 figure was higher than in any other year of the record.



Employment by Economic Areas.—Employment in all provinces except New Brunswick was generally brisker in 1939 than in 1938, although in the first few months comparison with the same period in 1938 was unfavourable; also in most of the provinces the rate of expansion was accelerated towards the close of the year. Manufacturing in each of the economic areas, on the whole, afforded more employment than in 1938; trade also showed improvement in all parts of the Dominion. In the other industries there was less uniformity in the trends, but mining, transportation, and services generally reported greater activity than in the preceding year. Construction in Quebec and the Prairie Provinces, and logging in British Columbia showed increases over 1938, but elsewhere the comparisons for these industries were unfavourable.

2.—Index Numbers of Employment as Reported by Employers in Economic Areas, as at the First of Each Month, January, 1938, to December, 1939, with Yearly Averages Since 1928.

NOTE.—These indexes are calculated upon the average for the calendar year 1926 as 100. The relative weight shows the proportion of employees reported in the indicated economic area to the total reported by all employers making returns in Canada at Dec. 1, 1939. Averages for 1921-27, inclusive, are given at p. 770 of the 1938 Year Book.

Year.	Maritime Provinces.	Quebec.	Ontario.	Prairie Provinces.	British Columbia.	Canada.
Averages, 1928	106·6	108·3	113·8	117·9	106·4	111·6
Averages, 1929	114·8	113·4	123·1	126·3	111·5	119·0
Averages, 1930	118·3	110·3	114·6	117·1	107·9	113·4
Averages, 1931	108·1	100·9	101·2	111·5	95·5	102·5
Averages, 1932	92·2	85·5	88·7	90·0	80·5	87·5
Averages, 1933	85·3	82·0	84·2	86·2	78·0	83·4
Averages, 1934	101·0	91·7	101·3	90·0	90·4	96·0
Averages, 1935	103·7	95·4	103·3	95·2	97·7	99·4
Averages, 1936	109·4	100·7	106·7	99·3	101·1	103·7
Averages, 1937	121·0	115·4	118·3	99·3	106·8	114·1